



# White Rock Presbyterian Church

# Overlook

An informative newsletter published by the White Rock Presbyterian Church

November 2015

## From the Pastor's Desk



### **“Grace Upon Grace” Stewardship of God’s Resources**

Fellow Travelers on the Way,

Elsewhere in this edition of the Overlook you will find an article that provides some of the reasoning behind the *New Consecration Sunday* approach to financial stewardship for congregations. Please read and ponder that article as you continue consideration of your pledge of giving to our church for the year 2016.

You have probably heard before that in biblical times a steward, or household manager, was responsible for managing the resources of the steward's master, including financial resources. At the heart of Christian stewardship is the premise that we are stewards (managers) of God's resources, because indeed all things belong to God.

Our stewardship differs from the stewardship of ancient household managers, in that God encourages us to return some appropriate fraction of the good gifts we have received from God's hand, and not all of them! The question all of us are asked to consider is, “How shall I respond to God's abundant provision through my pledge of giving for 2016?” New Consecration

Sunday encourages joyful, generous, proportionate pledging and giving to God, through Christ's church.

In the Prologue of John's gospel, we find the claim that all things have come into being through the Word (Christ), and especially the life which is the light of all people. The Word became flesh and lived among us, full of grace and truth. “From his fullness we have all received, grace upon grace.” (John 1:16) “Grace Upon Grace” is the theme of the 2015 WRPC stewardship season.

From Christ's fullness we have all received, grace upon grace. Another way to phrase the fundamental question of this stewardship season is this: “How shall I respond to the grace upon grace I have received, from the fullness of Christ?”

God's blessings to you all, beloved saints, as you consider these questions.

Pastor John

---

## **WRPC Contact Information**

White Rock Presbyterian Church is located at 310 Rover Boulevard, Los Alamos, New Mexico 87544. Pastor John Guthrie can be reached at 505-709-8207 or by email at [jguthrie@wrpchurch.com](mailto:jguthrie@wrpchurch.com). Our church office administrator, Gillian Erickson, can be contacted at the church office (672-3682) Tuesdays, Wednesdays, and Thursdays, from 8:00 am until 12:00 pm. You may email her at [officemanager@wrpchurch.com](mailto:officemanager@wrpchurch.com).

---

## Session News

At our October meeting the Session heard a report on the October 16-17 meeting of the Presbytery of Santa Fe with particular concentration on the continuing discussion of options for redesign of the Presbytery. A document entitled "Vision and Shared Values," which the Presbytery had adopted some years ago, was reviewed in several hours of professionally-facilitated discussion, as were three possible models for the Presbytery of the future. A straw poll of commissioners indicated relative preferences for each model. Designated individuals will work together preparing for the next key milestone in this process which will occur at the February 2016 Presbytery meeting, where a refined model should be available for review, discussion, and (possible) decision.

An item of particular note for White Rock Church from the Presbytery meeting is that Jennifer Holmes was elected as the ruling elder commissioner from the Presbytery to the 2016 General Assembly in Portland, Oregon.

WRPC has reestablished a Budget and Finance Committee lead by Elder Bob Reinovsky to provide guidance through the transition to a new Treasurer and to provide a leadership home for various necessary "business" activities of the church, for example, those related to insurance, employee contracts, and state government regulation. Additional members of this Committee are Joan Barr, Lori Kelley, and Jeff Kelley.

The Session FOCUS topic for October was discussion of the appropriate array of unique ministries for WRPC, and Session leadership for each one. Watch for further description of these ministry groups in the near future, including possible changes in titles to better convey the intent and scope of each one; but using the current/provisional titles, the ministries and their Session leaders are these:

Evangelism	Bob Reinovsky
Discipleship	Joyce Haven
Worship	John Guthrie
Facilities	Rod McCabe
Fellowship	Vernon Kerr
Service/Mission	Jeff Goettee

-George Callaghan, Clerk of Session

## Ruling Elder and Deacon Nominations

The 2015 Nominating Committee is seeking candidates to serve as deacons and ruling elders. Is God calling you? Please see a Nominating Committee member: Jeff Goettee, Sumner Barr, Selma Reinovsky, or Vickie Teel.

The Nominating Committee is currently working to fill an at-large vacancy in its membership, due to the departure of Glenn Clemons. Volunteers are welcome! A called congregational meeting will be necessary to elect that person.

## Fellowship Ministry Update

The Fellowship Ministry Committee hosted an all-church dinner on the 18th of October; some twenty-five participants enjoyed a beef pot roast with vegetables, salad, and a cake to celebrate the recent marriage of Christine Haven (now Torres) and her husband Chris.

As an added attraction to the Pot Roast Dinner, Sumner and Joan Barr prepared, and Vernon Kerr narrated, a slide show of the construction of the church building from groundbreaking to completion, including pictures of the dedication ceremony. The date on the building's cornerstone is 1971; the cornerstone contains a box full of 1971 memorabilia.

Please remember the Packing Party for Operation Christmas Child boxes at 7:00 p.m. on November 6.

-Vernon Kerr, Fellowship Ministry Coordinator

## One Way to Multiply the Gift

The LANL 2016 Employee Giving Campaign through United Way of NNM is open for full and part time employees to sign up for 2016 payroll deductions from now until November 20.

Contributions to any local 501(c)3 organization have in the past received matching funds from LANL. WRPC has enrolled with United Way and is qualified for participation in the program. Several WRPC members and friends who receive full or part time compensation from LANL have used the LANL Employ Giving

Program for all or part of their giving to WRPC, and the matching funds have become a significant source of income for our church.

All of United Way's expenses for supporting the Employee Giving Program are covered by LANL, so every dollar donated by employees goes directly to the qualified organization of their choice. The program does have a cap for the total of matching funds; and, while there is no limit on the amount of an individual's gift to qualified organizations, there is a cap on the maximum individual gift that will be matched. We will not know the extent of the match for 2016 until the end of the enrollment period, but in recent years the match has added 30-40% to the gifts donated by employees.

For more information, or for assistance in using the LANL Employee Giving Program, contact Bob Reinovsky

## Consecration Sunday Is Coming!

Congregations that approach financial stewardship from a biblical perspective do not view the money Christians give to their church as a way to pay the church's bills. Rather, these congregations see financial contributions as a way to help people grow spiritually in their relationship with God by supporting their church's mission and ministry with a percentage of their incomes.

White Rock Presbyterian Church is again employing the *New Consecration Sunday Stewardship Program* as a way to reinforce the biblical and spiritual principles of generous giving in our stewardship education emphasis this year.

*New Consecration Sunday* is based on the biblical philosophy of the need of the giver to give in order to promote his or her own spiritual development, rather than on the need of the church to receive. Instead of treating people like members of a social club who pay dues, WRPC treats its members and friends like followers of Jesus Christ who want to give unselfishly as an act of discipleship. *New Consecration Sunday* encourages people to practice proportionate and systematic giving in response to the question, "How shall I respond to God's abundant provision through my pledge of giving for 2016?"

During morning worship on Consecration Sunday, November 15, we will ask our friends and members to

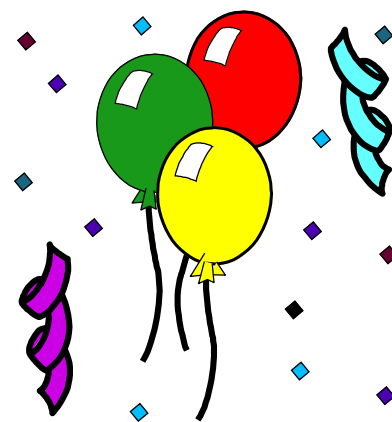
make a financial commitment to our church's ministries in our community and around the world. The Rev. Floyd Smith will be our guest preacher; expect a rousing message from Floyd!

We will do no home solicitation to ask people to complete cards. During morning worship I will conduct a brief period of instruction and inspiration, followed by members and friends making their commitments as a confidential act of worship. Since we will make no follow-up visits to ask our saints to complete their cards, we will make every effort to inform, inspire, and commit everyone to attend Consecration Sunday worship on November 15, followed by great bar-be-que meal, catered by Steve and Julie Wallin.

Thanks sincerely for your deliberate prayer and thought as you consider your pledge of giving to God, through White Rock Presbyterian Church, for the coming year.

-John Guthrie  
2015 Stewardship Committee Moderator

## November Birthdays!



Craig Kelley 6  
Allen Robinson 25

## Daylight Saving Time Ends

DST ends Sunday, November 1. Be sure to set your clocks back one hour before retiring Saturday night, and join us for worship on Sunday!

## Engage – A New Approach to Evangelism, Discipleship, and Mission

WRPC members and friends will have an opportunity beginning in January to participate in a new study, called *Engage*, produced by denominational leaders, which invites participants to think in new ways about the traditional church ministries of evangelism, discipleship, and mission.

The writers of *Engage* say this about the study:

*Engage*, a new evangelism approach, helps churches become relevant again. As congregations learn how to share their faith they attract people who join them in following Jesus. Together they join in God's mission of transformation in their neighborhoods and communities.

Pastor John will lead the *Engage* study on Sundays, following coffee fellowship, beginning January 10. The study will run for at least six weeks, and possibly a few more, depending on the schedule John chooses for the study.

The *Engage* curriculum encourages participants to share their own faith journeys with one or two others from time to time throughout the study; it encourages participants to think deeply about their faith and to share their discoveries with others, which in turn requires some degree of vulnerability and openness.

Pastor John will be glad to answer questions. Please plan on joining others for an examination of new ways for WRPC to be Christ's church, through evangelism, discipleship, and mission, beginning in January.

### Frances Naffziger Retiring from Service to WRPC

After more than thirty (30!) years of faithful service as WRPC's second-Sunday accompanist, Frances Naffziger has elected to retire from her position due to continuing health issues. Frances will certainly welcome your phone calls and cards of appreciation. You will find contact information for her in your 2015 church directory.

The Worship Ministry team will soon schedule a reception of thanksgiving for Frances. Stay tuned for the announcement of a date.

## Carol Singing at the State Penitentiary

WRPC members and friends will join folks from other churches to sing Christmas carols for the inmates at the state penitentiary south of Santa Fe on the evening of Thursday, December 10. Sumner Barr is again the organizer of this event for WRPC. Sumner has already notified many WRPC members and friends that he will submit their names for approval by penitentiary authorities; if you have not yet heard from Sumner, please contact him before November 8 so that you may also be approved. Join us as we share a bit of Christmas joy with prison inmates!

### Ramp It Up!

WRPC and the Navajo House of Fellowship teams have built two handicap-access ramps for existing homes in the Bread Springs area, and now we will be building at least three more, thanks to a recent grant from the General Assembly of the PC(USA).

WRPC was awarded \$2,044.50 from a restricted fund designated for medical work among Navajos. Our grant application describes plans to build ramps for homes of elderly or mobility-impaired Navajos who have physician's orders to use wheelchairs, crutches, or canes. The grant will fund all the materials. WRPC and HOF will supply the labor and food for the workers, as well as lodging and transportation costs. The work will be done in collaboration Fred and Lorraine Thomas and the Navajo House of Fellowship near Bread Springs.

The ramp project is a continuation of an eight-year partnership with the House of Fellowship and its outreach to community members who are in need of physical assistance as an expression of God's love and mercy.

We are thankful for God's continual provision for our work with our Navajo brothers and sisters. Stay tuned for notices regarding the specifics of when and where the next ramp-building project will happen, and please join in service through prayer, labor, food contributions, or financial support.

-Jennifer Holmes



## Presbyterian Women News

PW's "First Wednesday" luncheon will be scheduled soon (possibly not on a Wednesday). The next luncheon may also offer a time to work with Mary Medendorp sorting and organizing donated items for Operation Christmas Child shoeboxes.

For the weekly Bible study schedule contact Carol Honig. The monthly Circle/Bible study will meet at the church on Thursday, November 19, from 10:00 am to noon as we continue studying *The Woman Who Named God* (Abram and Sarai), led by Selma Reinovsky. Come join us!

The hunger-relief project "Souper Supper" (which is open to the community) will be considered in the early spring.

Thank you for your continued donations of Campbell's product labels and General Mills "Box Tops for Education." You will find a basket on the side table in the hallway for donations. For several years the labels were donated to the McCurdy School in Albuquerque. However, the school no longer functions as "Presbyterian" and there is no longer a need for them. Alternatives are being considered. Small "travel-size" shampoos, etc. are also appreciated. Any small hand/ facial soap bars will be packed in OCC shoeboxes.

Give thanks to God for our many blessings!

-Joyce Berzins

## Los Alamos Faith and Science Forum Winter Series

The Los Alamos Faith and Science Forum announces its first winter discussion series: "What Makes Us Human?". Members of the forum will lead the discussions every third Tuesday except in December, through May 17 in Kelly Hall at Trinity on the Hill Episcopal Church. A short video and/or presentation will begin at 6:00 pm, followed by discussion at 6:30 pm, ending around 7:00 pm.

The next Faith and Science Forum gathering on November 17 will consider the topic, "Did Neanderthals Go to Heaven?" The group will look at the progression of human-like (hominid) creatures, and

ask how knowledge of their evolution relates to the narrative found in the book of Genesis. Everyone is welcome.

## Operation Christmas Child Packing Party

The annual OCC packing party is set for Friday, November 6 at 7:00 pm in Memorial Hall. Come and help fill boxes for children throughout the world, sharing the love of Christ with boys and girls far away. Remember to invite neighbors and friends, including children.

Items still needed include small toys, baseballs, toy cars, craft kits, toothpaste, toothbrushes, washcloths, Scotch tape, individually-wrapped hard candy, and school supplies. Gifts for older children (10-14 years) are especially needed. Call Mary Medendorp for more information.

Refreshments! Door prizes! Laughter and fun! Sharing the love of Christ! Come join us!

## All Saints Day

This year All Saints Day, November 1, falls on a Sunday, and WRPC will on that day remember God's faithfulness to us in life and in death, recall the promise of resurrection for all the faithful, and give WRPC members and friends an opportunity to remember and celebrate the lives of their loved ones who are now at rest.

The Lord's Supper will also be celebrated on November 1, a reminder that faithful believers, from all times and all places, are somehow mysteriously present when we gather at Christ's table, including those who have died in Christ.

You are welcome to bring photographs of departed loved ones for display in the hallway.

Come worship with us on All Saints Day, November 1!

---

**Go Paperless!** Save a stamp! If you would like to receive your copy of the Overlook electronically then send your email address to our WRPC Office Manager at [officemanager@wrpchurch.com](mailto:officemanager@wrpchurch.com).

## Mission Co-Worker Meet James and Jodi McGill



James and Jodi McGill have been PC(USA) mission co-workers in [Malawi](#) since 1995. Since 2000 they have worked in Mzuzu, Malawi, **just two** hours from Embangweni, where they had lived for the previous 10 years. Jim and Jodi moved to Mzuzu at the request of the Synod of Livingstonia of the Church of Central Africa, Presbyterian (CCAP), the PC(USA)'s partner in Malawi. They moved to Mzuzu to widen the scope of their work, to include the entire synod. Jodi began working part-time at the Ekwendeni Hospital's nursing school in 2004 as a clinical instructor.

Malawi, a relatively small landlocked country on the African continent, is poor and has suffered from drought and floods as well as the spread of HIV/AIDS. Mzuzu, a small town with electricity, email access, shops and several schools, is located in the northern region of Malawi. In spite of the many challenges and hardships Malawi faces, the faith of its people remains strong. With roots in the Church of Scotland, the Free Church of Scotland, and the Dutch Reformed Church of South Africa, the CCAP was formed in the late 1940s. Since 1950 the PC(USA) has sent many long-term and short-term mission personnel to serve in the country. The Synod of Livingstonia, one of four synods of the CCAP, grew out of a mission station founded in 1875 and named in honor of David Livingstone, the famed Scottish Presbyterian missionary.

Jim serves as coordinator of protected water for the Synod of Livingstonia. He coordinates the clean water and sanitation work of the synod's three hospitals and the clean water section of the synod's Development Department. The focus of his work is to ensure sustainability at the

community level and to ensure the church is a strong presence in the rural development of Malawi and an effective advocate for its people.

Prior to their move to Mzuzu, Jodi was a staff nurse at Embangweni Hospital, which was founded by mission personnel of the Free Church of Scotland in 1926. She treated patients in the outpatient department, assisted with administration, and worked with Malawian counterparts to develop and implement primary health care projects. In Mzuzu, as coordinator of primary health care, she works with the synod's three hospitals, the congregation-based malaria prevention program, HIV/AIDS prevention and care, support programs in communities and hospitals, and a variety of other public health programs.

Jodi holds a Bachelor of Science degree in nursing from the University of Arizona and a Bachelor of Science in chemistry and microbiology from Northern Arizona University. She also holds an M.S. in nursing and a master's in public health from Emory University.

Jim received his B.S. in physics from Wake Forest University before finishing his M.S. in geological engineering at the University of Arizona. Jim has spent many years in Africa doing geophysical research for the Geology Department at Duke and as the child of Presbyterian missionaries to the Republic of Congo.

## Important Contacts

Clerk of Session:

George Callaghan, 505-984-1868  
callahang@aol.com

WRPC Office Manager

Gillian Erickson, 672-3682  
officemanager@wrpchurch.com

WRPC Webmaster:


Craig Kelley, 672-3133, kelleys@q.com

Overlook Editor:

Dick Heaton, 662-0028  
rheaton@hotmail.com

# November 2015

Office hours: T, W, Th, 8:00 am - 12:00 pm +++ 672-3682, officemanager@wrpchurch.com

Sunday	Monday	Tuesday	Wednesday	Thursday	Friday	Saturday																																																																																																		
<b>1</b> 9:15 AM Worship with the Lord's Supper 10:30 AM Coffee Fellowship 11:00 AM Bible Study 12:00 PM "Out-to-Lunch Bunch" <i>All Saints' Day</i>	<b>2</b> 7:00 PM Prayer Group	<b>3</b>	<b>4</b> 12:00 PM WRPW Luncheon	<b>5</b> 7:30 PM Journeys in Faith Dialogue	<b>6</b> 6:30 AM PM in the AM Operation Christmas Child Packing Party	<b>7</b>																																																																																																		
<b>8</b> 9:15 AM Worship 10:30 AM Coffee Fellowship 11:00 AM Bible Study	<b>9</b> 7:00 PM Prayer Group	<b>10</b> 7:30 PM Worship Ministry Meeting	<b>11</b> <i>Veterans Day</i>	<b>12</b> 7:30 PM Journeys in Faith Dialogue	<b>13</b> 6:30 AM PM in the AM	<b>14</b>																																																																																																		
<b>15</b> 9:15 AM Worship 10:30 AM Coffee Fellowship 11:00 AM Bible Study 12:00 PM Session <i>Consecration Sunday</i>	<b>16</b> 7:00 PM Prayer Group	<b>17</b>	<b>18</b>	<b>19</b> 10:00 AM PW Circle 7:30 PM Journeys in Faith Dialogue	<b>20</b> 6:30 AM PM in the AM	<b>21</b>																																																																																																		
<b>22</b> 9:15 AM Worship 10:30 AM Coffee Fellowship 11:00 AM Bible Study <i>Christ the King</i>	<b>23</b> 7:00 PM Prayer Group	<b>24</b>	<b>25</b>	<b>26</b> Happy Thanksgiving! 	<b>27</b> 6:30 AM PM in the AM	<b>28</b>																																																																																																		
<b>29</b> 9:15 AM Worship 10:30 AM Coffee Fellowship 11:00 AM Bible Study <i>1st Sunday of Advent</i>	<b>30</b> 7:00 PM Prayer Group	<table border="1"> <thead> <tr> <th colspan="7">Oct 2015</th> <th colspan="7">Dec 2015</th> </tr> <tr> <th>S</th><th>M</th><th>T</th><th>W</th><th>T</th><th>F</th><th>S</th> <th>S</th><th>M</th><th>T</th><th>W</th><th>T</th><th>F</th><th>S</th> </tr> </thead> <tbody> <tr> <td></td><td></td><td></td><td></td><td>1</td><td>2</td><td>3</td> <td></td><td></td><td>1</td><td>2</td><td>3</td><td>4</td><td>5</td> </tr> <tr> <td>4</td><td>5</td><td>6</td><td>7</td><td>8</td><td>9</td><td>10</td> <td>6</td><td>7</td><td>8</td><td>9</td><td>10</td><td>11</td><td>12</td> </tr> <tr> <td>11</td><td>12</td><td>13</td><td>14</td><td>15</td><td>16</td><td>17</td> <td>13</td><td>14</td><td>15</td><td>16</td><td>17</td><td>18</td><td>19</td> </tr> <tr> <td>18</td><td>19</td><td>20</td><td>21</td><td>22</td><td>23</td><td>24</td> <td>20</td><td>21</td><td>22</td><td>23</td><td>24</td><td>25</td><td>26</td> </tr> <tr> <td>25</td><td>26</td><td>27</td><td>28</td><td>29</td><td>30</td><td>31</td> <td>27</td><td>28</td><td>29</td><td>30</td><td>31</td><td></td><td></td> </tr> </tbody> </table>					Oct 2015							Dec 2015							S	M	T	W	T	F	S	S	M	T	W	T	F	S					1	2	3			1	2	3	4	5	4	5	6	7	8	9	10	6	7	8	9	10	11	12	11	12	13	14	15	16	17	13	14	15	16	17	18	19	18	19	20	21	22	23	24	20	21	22	23	24	25	26	25	26	27	28	29	30	31	27	28	29	30	31		
Oct 2015							Dec 2015																																																																																																	
S	M	T	W	T	F	S	S	M	T	W	T	F	S																																																																																											
				1	2	3			1	2	3	4	5																																																																																											
4	5	6	7	8	9	10	6	7	8	9	10	11	12																																																																																											
11	12	13	14	15	16	17	13	14	15	16	17	18	19																																																																																											
18	19	20	21	22	23	24	20	21	22	23	24	25	26																																																																																											
25	26	27	28	29	30	31	27	28	29	30	31																																																																																													

White Rock Presbyterian Church  
310 Rover Blvd.  
Los Alamos, NM 87544