



White Rock Presbyterian Church

Overlook

An informative newsletter published by the White Rock Presbyterian Church

September 2015

From the Pastor's Desk



“Christ’s Call to Death”

During the years in which Jesus was calling me to service as a pastor, two friends and I formed a small study group, which met weekly to read and discuss Christian books that we thought would lead us into lives of deeper discipleship, because all three of us were pretty well convinced that we had a lot to learn about discipleship. One member of my study group was ordained as a pastor shortly after me, and the other remains a deeply dedicated layperson. An obvious choice for our group to read was Dietrich Bonhoeffer’s 1937 book, *Nachfolge*, translated into English in 1959 with the title, *The Cost of Discipleship*, and issued in a new translation in 2003 with the title, *Discipleship* (in my opinion, a much better translation).

Among other reading that I did in those years, the Holy Spirit used *Discipleship* to gently but persistently move me toward saying “yes” to a new vocation as a pastor. Bonhoeffer’s *Discipleship* is a dangerous book, as the Bible is a dangerous book. Bonhoeffer’s clear perception of the life of discipleship under Christ is a stringent reminder that such a life is not in any manner supposed to be easy or comfortable.

In a chapter entitled, “Discipleship and the Cross,” Bonhoeffer reminds us of Jesus’ words in Mark 8:34-37 (with parallels in Matthew and Luke):

If any want to become my followers, let them deny themselves and take up their cross and follow me. For those who want to save their life will lose it, and those who lose their life for my sake, and for the sake of the gospel, will save it. For what will it profit them to gain the whole world and forfeit their life? Indeed, what can they give in return for their life?

Bonhoeffer interprets this passage and others in this chapter, including this:

The first Christ-suffering that everyone has to experience is the call which summons us away from our attachments to this world. It is the death of the old self in the encounter with Jesus Christ. Those who enter into discipleship enter into Jesus’ death. They turn their living into dying: such has been the case from the very beginning. The cross is not the terrible end of a pious, happy life. Instead it stands at the beginning of community with Jesus Christ. Whenever Christ calls us, his call leads us to death.

Why would we willingly opt for this death? Because of the one who calls.

I commend Bonhoeffer’s book to you, but be careful. After an encounter with it, you may find yourself no longer the person you were before you opened it.

Pastor John

WRPC Contact Information

White Rock Presbyterian Church is located at 310 Rover Boulevard, Los Alamos, New Mexico 87544. The pastor, Rev. John Guthrie, can be reached at 505-709-8207 or by email at jguthrie@wrpchurch.com. Our church office administrator, Gillian Erickson, can be contacted at the church office (672-3682) Tuesdays, Wednesdays, and Thursdays, from 8:00 am until 12:00 pm. You may email her anytime at officemanager@wrpchurch.com.

Session News

At the August Session meeting, we took several moments to thank Susan Buxton for her contributions to WRPC in her seven years as Church Treasurer. As the motion reads in the Minutes "...the Session thanks Susan Buxton profusely for her faithful, diligent, professional service and priceless contributions..." Certainly Susan's contributions went far beyond her role as Treasurer. Terry's leadership of our support Ministry with Susan's assistance has left our buildings and grounds much improved. We probably don't fully appreciate, yet, all the Buxton's have added to our congregation. More importantly we will miss their participation in the fellowship of the WRPC family.

The Session continues to struggle finding the right arrangement of Ministry responsibilities for the next year or more to reflect the challenges we face and the conclusions from the New Beginnings work done earlier this year. In particular we seek the right way to include in our priorities the elements of evangelism and discipleship, along with the leadership of worship, service/mission, fellowship, education, and facilities. The Session did confirm in August our commitment that evangelism and discipleship must be part of our Ministry structure going forward.

George Callaghan

Stewardship Season

The 2015 Stewardship Season will begin in early October and finish in mid-November. This year WRPC will again be employing the New Consecration

Sunday stewardship materials and approach, which has been used with success for the past two years.

The New Consecration Sunday (NCS) approach to stewardship is based on the principle that pledging and giving to churches must be motivated by a sense of joy and thanksgiving for what God has done in the lives of individuals and in the life of the church. NCS does not begin with a budget that the congregation is asked to fund. Instead, NCS asks every individual or family to consider God's blessings and pledge accordingly. NCS asks individuals or families to make a pledge, a covenant, with God (not the church), in response to God's grace.

In Matthew 6:21, Jesus says to a crowd gathered on a mountain, "Where your treasure is, there your heart will be also." The NCS program encourages all of us to examine ourselves and to determine where our treasure lies. Pledging and giving to God through one's church is fundamentally different from all other kinds of charitable giving. Our giving to God is motivated by the joy we have in being redeemed and restored through the cross and resurrection of Christ Jesus. Nothing the world has to offer compares with that motivation!

As we prepare the time of self-examination and joyful response that is Stewardship Season, I encourage you to ponder and pray over the question raised by the psalmist, "What can I give back to the Lord for the blessings he's poured out on me?" (Psalm 116:12, The Message version)

Pastor John

Small Groups

The organization and start-up of small groups remains imminent, but may wait until the WRPC congregation has been through a dedicated study of evangelism later in the fall. Prayers for the WRPC small group ministry are surely appreciated.

Fellowship News

The Fellowship Committee reports that the train trip to Winslow had eleven members participating. It was a total success. Some went to see the Meteor Crater while the rest of us went to a nearby museum and did

other things. Jennifer met a friend of her mother's at the museum and we got to see a lot of history. The Fred Harvey hotel (La Posada) was one of only two Fred Harvey hotels where the waitresses had uniforms different from the standard one most Harvey Girls wore. (The other was the La Fonda in Santa Fe.)

We met some of Jennifer's friends one evening and one was a lady who had just retired as a locomotive engineer for the BNSF railroad after 41 years. (And I always thought that was a man's job!) Gail is training her grandson to take her place.

Riding the train is not what it used to be in the old days. Upper decks didn't exist then and I had forgotten how much sway there was. The amount of train traffic is huge. A freight train goes through Winslow every twenty minutes or so, either way. By the way, passenger trains are never on time. Freight has the priority.

Vernon Kerr

PW News

PW PURPOSE: "Forgiven and freed by God in Jesus Christ and empowered by the Holy Spirit, we commit ourselves

- to nurture our faith through prayer and Bible study,
- to support the mission of the church worldwide,
- to work for justice and peace,
- and to build an inclusive, caring community of women that strengthens the Presbyterian Church (U.S.A.) and witnesses to the promise of God's kingdom."

Welcome to September—already! We trust everyone has enjoyed pleasurable leisure summer time with families and interesting safe travels. PW is eager to serve our "purpose." However, we are still in the thoughtful process of reorganizing and making decisions as to how best to pursue these goals, as our numbers are small. We are searching for suggestions, changes, or additions with respect to Wednesday luncheons (potluck or dine out?), Bible Study/Circle, mission projects, etc.

The First Wednesday Luncheon will be Wednesday, September 2, at the Little Saigon Restaurant in White

Rock. All are welcome for fellowship, discussion, and planning.

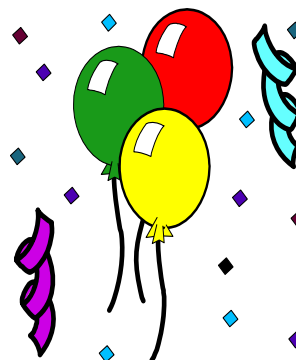
For information about the weekly Bible study group please contact Carol Honig. The monthly study group/Circle will meet Thursday, September 17, at the church as we continue to study *Abraham's Dilemma and the Birth of Three Faiths*, led by Selma Reinovsky. Come join us.

We continue to collect Campbell's product labels and Box Tops for Education and also your surplus travel-size personal care items for the Northern N.M. Crisis Center Family Shelter in Espanola, which also serves Los Alamos County. Look for donation baskets on the side table in the hallway.

Joyce Berzins

Go Paperless! Save a stamp! If you would like to receive your copy of the Overlook electronically rather than through the mail, just let our WRPC Office Manager know and make sure she has your correct e-mail address. We'll send you a PDF file at the beginning of the month. You'll get your Overlook quicker and it will be in glorious color as well.

September Birthdays



Vickie Teel	10
Sheila Schiferl	11

Save the Date!

Next Bible Study for Adults

Pastor John will begin a new Bible study for adults following worship on Sunday, September 13. Having worked through Matthew, Luke, and Acts over the past year, John will select a book from the Hebrew Scriptures (Old Testament) for study this fall. Stay tuned and plan to join the group following coffee fellowship, beginning September 13.

New Interdenominational Men's Study on the Book of Revelation

Bible Study Fellowship, an interdenominational, nation-wide ministry devoted to Bible study, is offering a new study in White Rock of the book of Revelation for men. The class will meet every Tuesday beginning September 15 at 6:30 pm at White Rock UMC. For more information call Mark Prokop, 672-4061. For more information about Bible Study Fellowship, visit www.bsfiinternational.org.

House of Fellowship Work Weekend September 18-20, 2015

There are many ways to support the service trip to House of Fellowship on **September 18-20**. Our activities will include:

- Building a ramp for a needy family in the Bread Springs community
- Painting the exterior of Fred and Lorraine Thomas's home
- Serving meals to all who attend
- Delivering firewood to the elderly or needy
- Dedicating **Manny's Tool Box**, the new tool lending program honoring the memory of long-time WRPC member Manny Honig
- Sharing Sunday worship with our friends at HOF
- Fellowship during meals and work

Here are some ways you can help:

- Sign up to go—there are options for work and worship on Saturday, Sept. 19, and Sunday Sept. 20. (Participants need to make their own

overnight accommodations in Gallup. We typically travel to Gallup on Friday night to get an early start on Saturday morning.)

- Volunteer your time to make or provide food for the HOF and WRPC participants. We will be feeding about 30 people for Saturday lunch, 50 people for Saturday dinner, and 20 people for Sunday breakfast. Look for the donation sign-up sheet at church.
- Provide tools. Hammers, measuring tapes, drills, circular saw, squares, gloves, sharpies, and pencils are all needed. All tools should be labeled so they can be returned to you.
- Donate tools or funds to Manny's Tool Box (see Manny's Tool Box Wish List). Checks can be written to WRPC with "**Manny's Tool Box**" in the memo line.
- Provide an ice chest, water cooler, plastic tub, or tarp.
- Volunteer to pack up the vehicles going on Friday afternoon or early Saturday morning.
- Monetary donations are always welcome to support all aspects of the trip. WRPC is funding the materials for the handicap access ramp.
- Pray for all aspects of the trip and that the love of Christ will be evident to all through our work and fellowship.

Questions? Talk to Jennifer or email her at jenbholmes@yahoo.com

Operation Christmas Child

Save Friday night, November 6, for our packing party for Operation Christmas Child.

This year's brochure suggests that when packing a box one might start with a "WOW" toy, such as a doll, soccer ball, or stuffed animal. Then add other fun toys, hygiene items, school supplies, etc. If everyone would buy one or more "WOW" toys for our supplies that would be terrific!

Our other supplies for the boxes are coming along pretty well. We have a good supply of school supplies and stuffed animals. Some things we especially could use include: hygiene items (no liquids), clothing items, "WOW" toys, and other miscellaneous items (such as hard candy, AAA batteries, Scotch tape, large rubber bands, etc.) and, of course, prayers.

We can always use additional cash donations. We need it for the soccer ball pumps, as well as shipping and handling costs, plus any other items and supplies that we will need.

There are Samaritan's Purse brochures available on the table in the hall with some gift item ideas that show how to pack a shoebox.

Mary Medendorp

Mission Co-Worker Rev. Michael Parker

Rev. Dr. Michael Parker is a Mission Co-worker serving in Egypt since 2012 at the invitation of the Evangelical Theological Seminary in Cairo.



Michael Parker is a Presbyterian teaching elder serving as the Director of Graduate Studies and a professor of Church History at the Evangelical Theological Seminary (ETSC) in Cairo, Egypt, a seminary of the Evangelical Presbyterian Church of Egypt. The school, founded in 1863 by U.S. Presbyterians, has its main campus in Cairo and two branch campuses, one in Alexandria and the other in Minya. ETSC has between 325 and 350 full time students, making it the largest Christian seminary in the Middle East. As ETSC grows and develops it is well positioned to become a center for Christian studies for the entire region of the Middle East.

While most Egyptians are Muslims, Egypt's Christian tradition reaches back to the apostolic era. The Evangelical Presbyterian Church in Egypt includes eight presbyteries, several programmatic councils, and approximately 350 congregations. It continues its faithful service amid the throes of monumental societal change as Egypt's government, constituted in the wake of the 2011 Arab Spring, continues to take shape.

Michael says, "My call primarily is to teach in Christian seminaries. It is a call to Christian service abroad." He first sensed God's leading toward cross-cultural ministry in the 1980s when as a seminary student he served for three months at a Christian radio studio in Pakistan. Michael has since served in seminaries in Sudan and Rwanda and in the national offices of the Presbyterian Church (U.S.A.) in Louisville.

Michael went to the Evangelical Theological Seminary in Cairo at a time of tremendous ferment. He was impressed with the school and its faculty, and appreciative of its strategic importance to Christians in Egypt and across the Middle East.

"There have been tumults in the streets, the targeting of Christians, and a change of government," he says. "There is still much that is unsettled. My challenge is to do my job, serving Christ in this place, amid the uncertainty."

Michael has learned much about cross-cultural ministry through scholarly inquiry. While serving abroad he has found John 7:17 to be particularly meaningful: "If anyone chooses to do God's will, he will find out whether my teaching comes from God or whether I speak on my own."

For Michael the verse teaches that religious truth is confirmed by living it. "In my own life, I know that God has confirmed my faith through his care and provision for me many times over, but never more so than while living abroad," Michael says. "It is in those times when I have had the least control over events that I have felt those 'everlasting arms' holding me up."

Michael is a member of National Capital Presbytery. He grew up in the Los Angeles area, and graduated from UCLA. He earned his M.Div. from Fuller Theological Seminary, with a concentration in international service. He received his M.A. and Ph.D. from the University of Maryland.

*but those who hope in the LORD
will renew their strength
They will soar on wings like eagles;
they will run and not grow weary,
they will walk and not be faint.*
Isaiah (40:31)

Engage: A New Approach to Evangelism

A cultural storm has wreaked havoc on the religious landscape. Our churches are standing, but where are the people? Who will build new bridges to those who live all around our churches?

What should congregations do?

Engage, a new evangelism approach, helps churches become relevant again. As congregations learn how to share their faith they attract people who join them in following Jesus. Together they join in God's mission of transformation in their neighborhoods and communities.

Engage the gospel by reclaiming our story that real and lasting life comes from a relationship with Jesus. Through Jesus we experience God setting things right and restoring a broken creation. *Engage* helps people in the church live into their own stories of transformation and the life-changing power of God's redemptive mission described in Scripture. Sharing this story of God's forgiving love and grace is the foundation of being a useful bridge again for a broken world to ...

Engage in discipleship by forming followers of Jesus who are nurtured in their faith and equipped for God's mission in the context of a disciple-making community. The Great Commission is not about making members but making disciples. Through worship, prayer, scripture, fellowship, and spiritual practices, we are encouraged and challenged to live Jesus' way. It is out of this structure of being a vibrant disciple that we are able to ...

Engage in God's mission by preparing people in the church to become missionaries in their neighborhoods and communities. God's forgiveness, the freedom we have in Jesus, is for the purpose of inviting others into a relationship with God, who brings healing, reconciliation, and restoration that transforms our lives, communities, cities, and culture. As we share our faith, working with God for justice and mercy, we become an extension of Christ in the world.

Engage is coming to WRPC this fall. Watch for more information soon.

Important Contacts

Pastor/Session Moderator:

Rev. John Guthrie, 505-709-8207
jguthrie@wrpchurch.com

Clerk of Session:

George Callaghan, 505-984-1868
callaghang@aol.com

WRPC Office Manager

Gillian Erickson, 672-3682
officemanager@wrpchurch.com

WRPC Webmaster:

Craig Kelley, 672-3133
kelleys@q.com

Overlook Editor:

Dick Heaton, 662-0028
rcheaton@hotmail.com

If I speak in the tongues of men and of angels, but have not love, I am only a resounding gong or a clanging cymbal. If I have the gift of prophecy and can fathom all mysteries and all knowledge, and if I have a faith that can move mountains, but have not love, I am nothing. If I give all I possess to the poor and surrender my body to the flames, but have not love, I gain nothing.

Love is patient, love is kind. It does not envy, it does not boast, it is not proud. It is not rude, it is not self-seeking, it is not easily angered, it keeps no record of wrongs. Love does not delight in evil but rejoices with the truth. It always protects, always trusts, always hopes, always perseveres.

Love never fails. But where there are prophecies, they will cease; where there are tongues, they will be stilled; where there is knowledge, it will pass away. For we know in part and we prophesy in part, but when perfection comes, the imperfect disappears. When I was a child, I talked like a child, I thought like a child, I reasoned like a child. When I became a man, I put childish ways behind me. Now we see but a poor reflection as in a mirror; then we shall see face to face. Now I know in part; then I shall know fully, even as I am fully known.

And now these three remain: faith, hope and love. But the greatest of these is love.

1 Corinthians (13:1-13)

Manny's Tool Box Wish List

Big Box

- 1 generator
- 1 welder
- 1 wet tile cutter
- 1 Graco paint sprayer
- 2 scaffolding
- utility trailer

Small Box

- 6' step ladder
- 6' level
- angle grinder
- Reciprocating Saw
- Jigsaw
- Hopper (for texturing)
- 100' HD extension cord
- 50' HD extension cord
- 25-30' HD extension cord
- hole saw set (bi-metal)
- HD wheelbarrow (2)
- Husky tool box---wheeled
- Ram set
- 8' ladder
- 20-ton bottle jack (2)
- wheeled husky toolbox
- air compressor hose (2)

Medium Box

- air compressor
- pneumatic roofing coil nailer
- worm drive
- cordless drill/driver
- tile cutter
- hammer drill
- extension ladder
- chop saw
- cordless right angle drill

Mini-Box

- hand saw
- framing hammer
- framing square
- pipe wrench

- roofing hammer
- drywall hammer
- jab saw (keyhole saw)
- drywall taping knife
- chisel set
- stud straightner
- floor tile scraper
- mortar hoe (2)
- shovel square (2)
- shovel, round
- sledgehammer
- axe
- spade bit set
- HD stapler (2)

How You Can Help

- Pray for Manny's Tool Box Ministry, especially that the people served would know Jesus as their savior.
- Participate in a work weekend on the Navajo Nation; see a Service Committee member for dates.
- Support a work weekend through prayer, food preparation, equipment loans, or fundraisers.
- Coordinate with Fred and Lorraine directly to offer your skills on a construction project.
- Donate money or tools to Manny's Tool Box. Checks can be made out to WRPC with "Manny's Tool Box" written in the memo line.

September 2015

Office hours: T, W, Th, 8:00 am - 12:00 pm +++ 672-3682, officemanager@wrpchurch.com

Sunday	Monday	Tuesday	Wednesday	Thursday	Friday	Saturday																																																																																										
		1	2	3 7:30 PM Journeys in Faith Dialogue	4 6:30 AM PM in the AM	5																																																																																										
		6 9:15 AM Worship with the Lord's Supper 10:30 AM Coffee Fellowship 11:00 AM Session	7 7:00 PM Prayer Group <i>Labor Day</i>	8 7:30 PM Worship Ministry Meeting	9	10 7:30 PM Journeys in Faith Dialogue	11 6:30 AM PM in the AM																																																																																									
13 9:15 AM Worship 10:30 AM Coffee Fellowship 11:00 AM Bible Study	14 7:00 PM Prayer Group	15	16	17 7:30 PM Journeys in Faith Dialogue	18 6:30 AM PM in the AM <div style="border: 1px solid black; padding: 2px;">House of Fellowship Trip</div>	19																																																																																										
20 9:15 AM Worship 10:30 AM Coffee Fellowship 11:00 AM Bible Study <div style="border: 1px solid black; padding: 2px;">HOF Trip</div>	21 7:00 PM Prayer Group	22	23	24 7:30 PM Journeys in Faith Dialogue	25 6:30 AM PM in the AM	26																																																																																										
27 9:15 AM Worship 10:30 AM Coffee Fellowship 11:00 AM Bible Study	28 7:00 PM Prayer Group	29	30	<div style="display: flex; justify-content: space-around;"> <div style="border: 1px solid black; padding: 5px;"> <p style="text-align: center; margin: 0;">Aug 2015</p> <table style="width: 100%; text-align: center; border-collapse: collapse;"> <tr><td>S</td><td>M</td><td>T</td><td>W</td><td>T</td><td>F</td><td>S</td></tr> <tr><td></td><td></td><td></td><td></td><td></td><td></td><td>1</td></tr> <tr><td>2</td><td>3</td><td>4</td><td>5</td><td>6</td><td>7</td><td>8</td></tr> <tr><td>9</td><td>10</td><td>11</td><td>12</td><td>13</td><td>14</td><td>15</td></tr> <tr><td>16</td><td>17</td><td>18</td><td>19</td><td>20</td><td>21</td><td>22</td></tr> <tr><td>23</td><td>24</td><td>25</td><td>26</td><td>27</td><td>28</td><td>29</td></tr> <tr><td>30</td><td>31</td><td></td><td></td><td></td><td></td><td></td></tr> </table> </div> <div style="border: 1px solid black; padding: 5px;"> <p style="text-align: center; margin: 0;">Oct 2015</p> <table style="width: 100%; text-align: center; border-collapse: collapse;"> <tr><td>S</td><td>M</td><td>T</td><td>W</td><td>T</td><td>F</td><td>S</td></tr> <tr><td></td><td></td><td></td><td></td><td></td><td></td><td>1 2 3</td></tr> <tr><td>4</td><td>5</td><td>6</td><td>7</td><td>8</td><td>9</td><td>10</td></tr> <tr><td>11</td><td>12</td><td>13</td><td>14</td><td>15</td><td>16</td><td>17</td></tr> <tr><td>18</td><td>19</td><td>20</td><td>21</td><td>22</td><td>23</td><td>24</td></tr> <tr><td>25</td><td>26</td><td>27</td><td>28</td><td>29</td><td>30</td><td>31</td></tr> </table> </div> </div>		S	M	T	W	T	F	S							1	2	3	4	5	6	7	8	9	10	11	12	13	14	15	16	17	18	19	20	21	22	23	24	25	26	27	28	29	30	31						S	M	T	W	T	F	S							1 2 3	4	5	6	7	8	9	10	11	12	13	14	15	16	17	18	19	20	21	22	23	24	25	26	27	28	29	30	31
S	M	T	W	T	F	S																																																																																										
						1																																																																																										
2	3	4	5	6	7	8																																																																																										
9	10	11	12	13	14	15																																																																																										
16	17	18	19	20	21	22																																																																																										
23	24	25	26	27	28	29																																																																																										
30	31																																																																																															
S	M	T	W	T	F	S																																																																																										
						1 2 3																																																																																										
4	5	6	7	8	9	10																																																																																										
11	12	13	14	15	16	17																																																																																										
18	19	20	21	22	23	24																																																																																										
25	26	27	28	29	30	31																																																																																										