



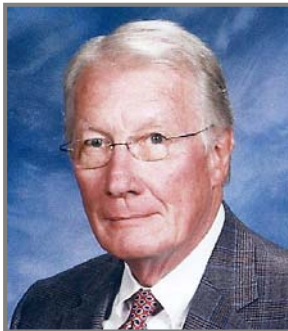
White Rock Presbyterian Church

Overlook

An informative newsletter published by the White Rock Presbyterian Church

January 2013

From the Pastor's Desk



As I write this, it is Christmas Eve and I am listening to a choir singing about "Peace on Earth, Good Will to Men," a noble sentiment that we are reminded of each year at this time by virtue of the advent and birth of Jesus, the Prince of Peace and the one who taught us to love one another as he loved us.

As you read this, it will be in early January. The Christmas season will be over, the New Year will be at least a week old, and I will no longer be with you. While I knew that it was the right time for me to move on with my life and work, there is always a sense of loss and regret when friends have to part, and I will be feeling that myself for a while to come. So what shall I say to smooth the way for us as we have gone our separate ways?

Following is a charge given to the graduating class at Union Theological Seminary in Virginia in May, 1966, by the Dean and commencement speaker, Dr. Sibley Towner. I read it on my last Sunday with you and I have read it to graduating prospective interim pastors after training classes in the past, and I would like to leave it with you for your own thinking and hopefully your inspiration.

Go, aware that you are prepared enough! You may well be tempted to join that cadre of people who come back and say, "Why didn't you tell me that...I wasn't ready!" Well, let me tell you a secret. You will never be ready. You will never know enough. You will never have fair warning for some of what lies ahead of you. But, you

have been prepared enough. Not just by your time here, but prepared by God's laying the foundations of your creation long before you were born, prepared by the indwelling of God's very Spirit. You have been prepared enough. But, you will never be fully prepared for Savannah, GA, or Milford, PA. And thus, you will go knowing that time and time again you will be driven back in the arms of the one who made us, the one who sent you forth in the first place and sends you again.^a

The essence of what Dean Towner was saying is that to be prepared for what is to come in your lives does not mean that you will know all of what lies ahead and you will be able to handle it on your own. Nor, does it mean that success is guaranteed just because we are good faithful people and that we love Jesus and he loves us in return and will deliver us from evil, even if his prayer suggest that.

To be prepared enough simply means that you are ready for what is to come: good/bad, up/down, left/right—whatever that may be. And, to be prepared enough is to know that when discouragement and defeat seem to be the only option for your future, you do have the words and the arms of Jesus to fall back on and into. If anyone knew what defeat and utter rejection was, he did. And yet, he literally rose above it.

That is the calling of a Christian and the mission of the church—to press on and to be resurrected. That is what each of you, as members of WRPC, are called to prepare yourselves to do: to be resurrected and born again.

Grace and Peace,
DH

^aAdapted from a dialogue sermon by Drs. Sibley Towner and William Arnold, Baccalaureate Service, June 2, 1996, Union Theological Seminary

Letter from the Editor



Well, the holidays are now over. Whew! Don't get me wrong, I love the Christmas season and all the joy and optimism that it brings. But it can also be a very stressful time of year. Just think about all the things that go into a typical Christmas celebration. One has to

write and send Christmas cards, find a Christmas tree, decorate the Christmas tree, decorate the house, put up Christmas lights, shop for gifts, wrap the gifts, bake Christmas goodies, entertain guests...it goes on and on. And of course all the decorating has to be undone when it's over. Not to mention that the car will undoubtedly break down in the midst of all this. A person could get tired just by thinking about all this.

However, such a view really misses the point. An attitude adjustment is needed. I am reminded of a passage from Luke that seems to address this issue:

As Jesus and his disciples were on their way, he came to a village where a woman named Martha opened her home to him. She had a sister called Mary, who sat at the Lord's feet listening to what he said. But Martha was distracted by all the preparations that had to be made. She came to him and asked, "Lord, don't you care that my sister has left me to do the work by myself? Tell her to help me!"

"Martha, Martha," the Lord answered, "you are worried and upset about many things, but only one thing is needed. Mary has chosen what is better, and it will not be taken away from her."
(Luke 10:38-42)

This passage can be troubling because it seemingly condones laziness and unhelpfulness. Martha certainly thought that Mary was being unhelpful. But this too misses the point. Luke can easily be over-analyzed here and I'm sure that many sermons have been given on this passage, discussing all levels of nuance and supporting many different agendas. However, I think the message is really quite simple: Pay attention to what is important and don't worry about the other things. Martha was worried and distracted by the dishes and the food and the preparations while Mary was spending her time with our Lord. In the grand scheme of things, which is more important?

I confess that, like Martha, I tend to worry about and be distracted by all the details and preparations so that I miss the main event. Therefore, one of my New Year's resolutions will be to focus on what is really important, while avoiding the distractions of unimportant things. I suspect, and I hope, that this will bring me a little closer to our Lord and relieve some stress at the same time.

By the way, I never did put up the outdoor Christmas lights this year. But it really wasn't that important.

Dick Heaton

WRPC Contact Information

White Rock Presbyterian Church is located at 310 Rover Boulevard, Los Alamos, New Mexico 87544. We are currently without a pastor; any of the church elders can be reached through the church office. Our church office administrator, Gillian Erickson, can be contacted at the church office (672-3682) Tuesdays and Thursdays, 9:00 AM - 1:00 PM. You may email her anytime at officemanager@wrpchurch.com.

Office Hours for Gillian Erickson
Tuesdays and Thursdays only, 9:00 AM - 1:00 PM.

Once again Jesus went out beside the lake. A large crowd came to him, and he began to teach them. As he walked along, he saw Levi son of Alphaeus sitting at the tax collector's booth. "Follow me," Jesus told him, and Levi got up and followed him.

While Jesus was having dinner at Levi's house, many tax collectors and "sinners" were eating with him and his disciples, for there were many who followed him. When the teachers of the law who were Pharisees saw him eating with the "sinners" and tax collectors, they asked the disciples: "Why does he eat with tax collectors and 'sinners'?"

On hearing this, Jesus said to them, "It is not the healthy who need a doctor, but the sick. I have not come to call the righteous, but sinners."

Mark (2:13-17)

Session News

During the past month the Session worked to compile a Mission Study document that summarizes what WRPC has accomplished over the past year of the Interim Process and discusses our vision for the future. This will meet a Presbytery requirement for moving forward with the search for long-term pastoral leadership. We expect to have this complete early in January.

Also early in January the Session and the Deacons will meet with Sallie Watson, Regional Presbyter for the Presbyteries of Santa Fe and Sierra Blanca, to discuss options for interim pastoral leadership after Rev. Cole's departure and for the longer term.

Expect an opportunity for more elaboration on both topics at the Annual Meeting on 27 January 2013; the formal call for those meetings (of the Congregation and the Corporation) will be issued in January. Mark the date on your calendars now and plan to bring your questions to guide an update for the members of WRPC on our expected path forward.

During January you will see familiar faces filling our pulpit each Sunday as we move through an "interim interim" period.

George Callaghan

*Create in me a pure heart, O God,
and renew a steadfast spirit within me.
Do not cast me from your presence
or take your Holy Spirit from me.
Restore to me the joy of your salvation
and grant me a willing spirit, to sustain me.*

(Psalm 51:10-12)

Go Paperless! Save a stamp! If you would like to receive your copy of the Overlook electronically rather than through the mail, just let our WRPC Office Manager know and make sure she has your correct e-mail address. We'll send you a PDF file at the beginning of the month. You'll get your Overlook quicker and it will be in glorious color as well.

WRPC Mission Study

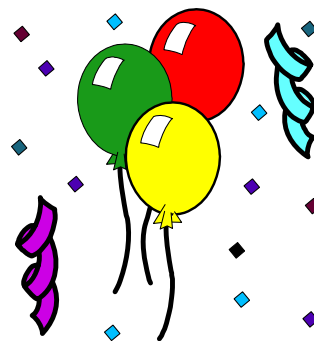
Since November the Session has been assembling a Mission Study document arising from our year-long period of prayer, discussion, study, and meditation on the future directions for White Rock Presbyterian Church. That study began in February with an examination of our history as a community of faith and concluded in September and October with two congregational discussions of the major directions outlined in the study. In between was a series of weekly discussions and brainstorming alternatives, detailing options and evaluating possibilities.

The Mission Study Document is complete and in final editing by the Session as 2012 draws to a close. In its final form it will contain some material about the history of WRPC; a summary of our year-long discussion about options for the future; some demographics about Los Alamos and the surrounding areas, a Vision Statement, and a sketch about WRPC today.

The Mission Study document will be available to the congregation in early January, and will be forwarded to the Presbytery Committee on Ministry at the same time.

Bob Reinovsky

January Birthdays



Karol Mack	3
Nathan McCabe	8
Rod McCabe	22
Terri Creager	28
Irene Davis-Dellinger	28

Worship in January 2013

On December 30 we said goodbye to Rev. Dr. Harry Cole after his 13 months with us as Interim Pastor. Harry begins as Interim Pastor at Calvary Presbyterian Church, Riverside CA, in January.

Through January we will have guest pastors in the pulpit.

On January 6, Sallie Watson, Executive Presbyter of the Presbytery of Santa Fe, will be with us to celebrate the Feast of the Epiphany. Sallie will preach from Isaiah (60:1-6) and Matthew (2:1-12) on "The Real Gifts of the Magi."

On January 13, Georgia Ortiz will be in the pulpit as we celebrate the Baptism of the Lord. Georgia is a retired pastor living in Chimayo. Georgia is active in the Jicarita Cluster, Mission in the North, and has preached for us as recently as last fall.

On January 20, Jim Roghair will join us, preaching and moderating the session. Jim is our Committee on Ministry (COM) liaison during the interim period, has preached for us regularly, and moderated the session before Harry Cole's arrival. Denominational emphasis for January 20 is Race Relations.

On January 27, Bill Aber will return. Bill is honorably retired and a former Executive Presbyter of the Presbytery of Santa Fe. He lives in Albuquerque and has preached for us frequently—indeed, whenever we can schedule him. Denominational emphasis for January 27 is Criminal Justice.

After Worship on January 6, Sallie Watson and the Session will meet to discuss options for pastoral services for the next few months and to review our progress toward beginning the process of searching for a new installed pastor.

Bob Reinovsky

PW News

We pray that the joys and blessings of the Christmas season may be with us all throughout the coming year. PW looks forward to another year of study, Christian fellowship, and serving others.

Please note the change: the Wednesday Monthly Luncheon will be at noon on 9 January at the church. Lunch will be provided. All women are warmly invited and encouraged to come and share in fellowship.

Bible Study/Circle will meet Thursday, 17 January, at 10:00 o'clock at the church, continuing with "The General Epistles." Please confirm the time with Selma.

Thank you for your donations of Campbell products labels and Box Tops for Education that help support Menaul School (Presbyterian) in Albuquerque. You will find a donation basket in the hallway.

Joyce Berzins

Treasury Notes

Financial Summary

Pledged giving January through November 2012 was short \$10,171.58 of the amount promised and budgeted. *Non-Pledged giving* exceeded the amount budgeted by \$1,150.58. *Expenses* were at 97% of the amount budgeted. The actual Budget Income shortage is \$5,686.05 through November. To cover the income shortage, we have been paying for the expense items from savings.

Our January through November financial summary is:

	Actual	Budget	Difference
Income:			
Pledged:	84,190.05	94,361.63	-10,171.58
Non-pledged:	6,067.58	4,917.00	1,150.58
Facility:	1,917.25	2,101.00	-183.75
Interest:	764.43	869.00	-104.57
<u>Applied Surplus:</u>	<u>9,904.62</u>	<u>9,904.62</u>	<u>0.00</u>
Income Total	102,843.93	112,153.25	-9,309.32
Expense Total	108,529.98	112,153.25	-3,623.27
Shortfall:	5,686.05		

The December financial books will be closed in January 2013.

We are using \$10,805.00 from the 2011 Budget Surplus in the 2012 Budget Income to meet expenses. The other half of the 2011 Budget Surplus will be used as income for our 2013

budget. The 2011 Budget Surplus was from the nearly five month period in which we did not have to pay a full-time pastor after Harry Chronis left and before Harry Cole came.

2013 Pledges

We have received \$86,590 in pledges for our 2013 Budget from *20 pledging units* at WRPC! The 20 pledging units represent 33 individuals in our church family. Thanks to each of you for your commitment!

To fully fund our Proposed 2013 Budget of \$121,380, we needed a new income category we are calling *Faith Income*. Four of our pledging families have taken advantage of the Los Alamos National Laboratory partial matching of donations through the United Way of Northern New Mexico Campaign to make their pledges to WRPC. This matched money will bring an extra \$9,025 to our Budget. This leaves \$8,780 still needed in Faith Income or in another income category, such as *Pledged* giving.

If you have not made your pledge for 2013, it is still not too late! We are hoping to hear from *everyone* in our WRPC family.

Financial Audit

A special thanks to Ann Heaton and Joyce Berzins for taking a few hours in the busy week before Christmas to conduct an audit of church financial records from the last quarter of 2011 through the third quarter of 2012. Also participating in the audit were Gillian Erickson, our Office Administrator, and Susan Buxton, WRPC Treasurer. No errors or discrepancies were discovered in the examined documentation. The financial records were maintained in accordance with standard accounting practices and principles. The report of the Audit Committee will be included in the 2012 Annual Report, available for the Annual Meeting on January 27, 2013.

Susan Buxton



Operation Christmas Child Shoebox Ministry

Do you know that WRPC (including some from the Korean church) filled 61 shoe boxes for Operation Christmas Child (OCC) this Year? I thought that this was an awesome amount for our small church. Thank you all for being very generous in doing this project again this year.

Do you ever wonder what happens to your shoe box once it's filled? I usually take our boxes to the nearest local Relay Center, which again this year was the White Rock Baptist Church (WRBC). From there they usually are transported to the NE New Mexico Team Center in Santa Fe, where they are then shipped to the Denver Processing Center. However this year a couple of people from the WRBC were volunteering at the West Coast Processing Center so they transported our boxes there. That is why some of us who did the Online Donation (where you can track the destination of your box) were informed that our boxes went to Peru!

Usually our boxes go to the Denver Processing Center. This is where Ann and Dick Heaton, Carol Honig, and Al and I volunteered our time, Tuesday and Wednesday, Dec. 4 and 5. Nearby motels provide discounted rates to volunteers for Operation Christmas Child.

When we arrived at the distribution center on Tuesday morning, we found everything was well organized, from the parking and signing in to the orientation and various work areas. Our group was assigned to work station #6. We each had various positions to fill. The first person's job was to take off the rubber bands, open the box, and look for and take out any envelopes with cash or checks. The next step (usually 2-4 people) was to look through the boxes for any "inappropriate" items. This included anything liquid (shampoo, lotion, glue bottles, bubbles, nail polish, body wash etc.), war related items (toy guns, military figures, knives, etc.), any chocolate (like M&M's), or any food items (granola bars, raisins, crackers & cheese, animal crackers, beef sticks/jerky, etc.). Many countries do not allow food items of any kind through customs. All the inappropriate items are later sorted at another station for donation elsewhere.

Besides taking out inappropriate items, we sometimes had to add items to fill out a box. The

processing center had some items that had been donated for that purpose. Also if any of the boxes were overflowing, we sometimes had to remove one or more items in order to get the lid back on. These we also used as filler items.

Next the boxes went to a person who taped the boxes shut with a taping machine. After the boxes are taped, the next person sorted them into shipping boxes according to age and gender categories. It was challenging to fit as many boxes as possible into the shipping boxes due to the varying sizes and shapes of the shoe boxes. Once the shipping boxes are full, the next person tapes the boxes shut, and puts them on the conveyor belt. They then go to the other end of the warehouse where they are put on pallets, then taken by forklift into the semi-trucks. Then they're ready to go!

They told us the boxes from the Denver Processing Center were going to the Philippines and Mexico. Some 12,000 volunteers helped over 800,000 boxes to be processed from Denver this year. This year Operation Christmas Child is celebrating the giving of over 100 million shoe boxes collected since 1993.

Please continue to pray that God will use these simple gifts in a mighty way, to bring joy, hope, and the gospel of Jesus Christ to children around the world.

Thank you all for your generous help in filling many wonderful boxes for Operation Christmas Child! I hope you enjoyed filling your boxes. We also had a good time at the Processing Center. Let me know if you might be interested in going next year.

(P.S. Look for a poster in the hallway with our photos from this event.)

Mary Medendorp



Stopping by Woods on a Snowy Evening

*Whose woods these are I think I know.
His house is in the village though;
He will not see me stopping here
To watch his woods fill up with snow.*

*My little horse must think it queer
To stop without a farmhouse near
Between the woods and frozen lake
The darkest evening of the year.*

*He gives his harness bells a shake
To ask if there is some mistake.
The only other sound's the sweep
Of easy wind and downy flake.*

*The woods are lovely, dark and deep.
But I have promises to keep,
And miles to go before I sleep,
And miles to go before I sleep.*

Robert Frost, "Stopping by Woods on a Snowy Evening" from **The Poetry of Robert Frost**, Edward Connery Lathem, ed. (1923).

Important Contacts

Pastor/Session Moderator:
Vacant

Clerk of Session:
George Callaghan, 505-984-1868
callaghang@aol.com

WRPC Office Manager
Gillian Erickson, 672-3682
officemanager@wrpchurch.com

WRPC Webmaster:
Craig Kelley, 672-3133
kelleys@q.com

Overlook Editor:
Dick Heaton, 662-0028
rcheaton@hotmail.com